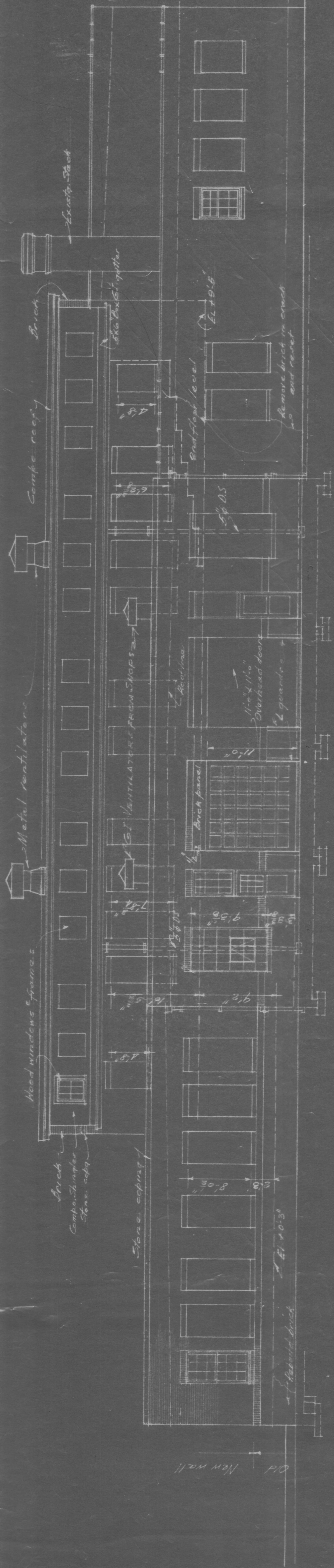
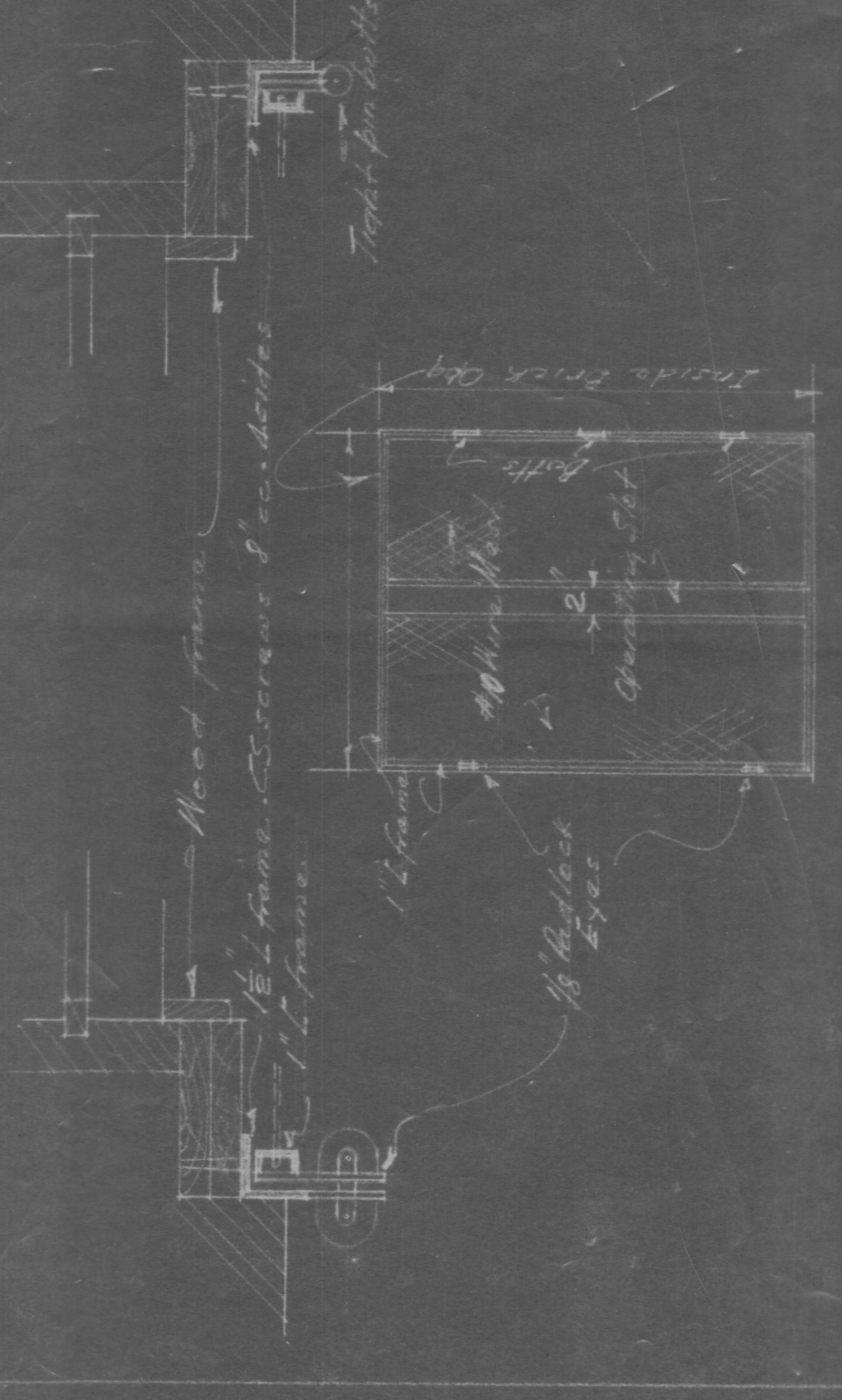
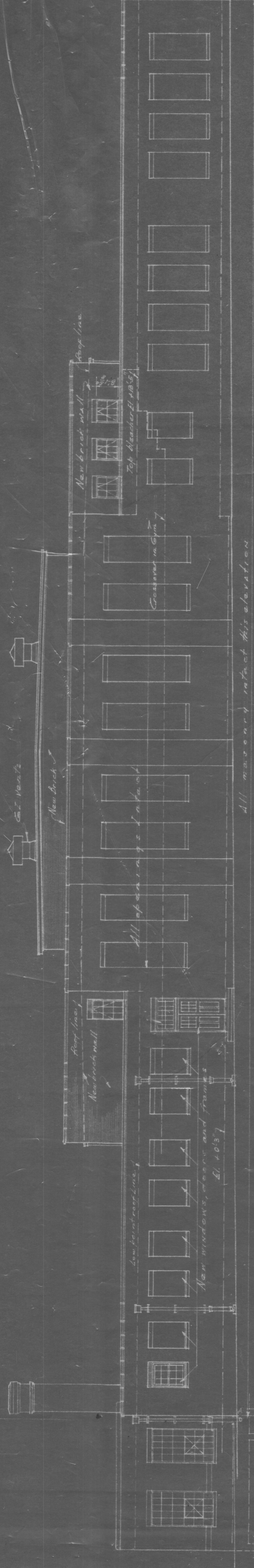


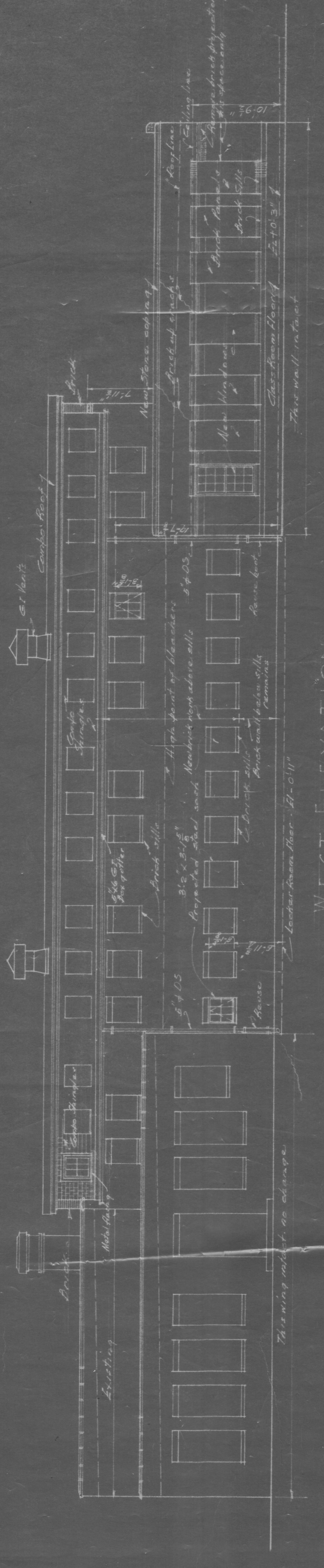
DETAIL WIRE GUARDS WINDOWS 1-6



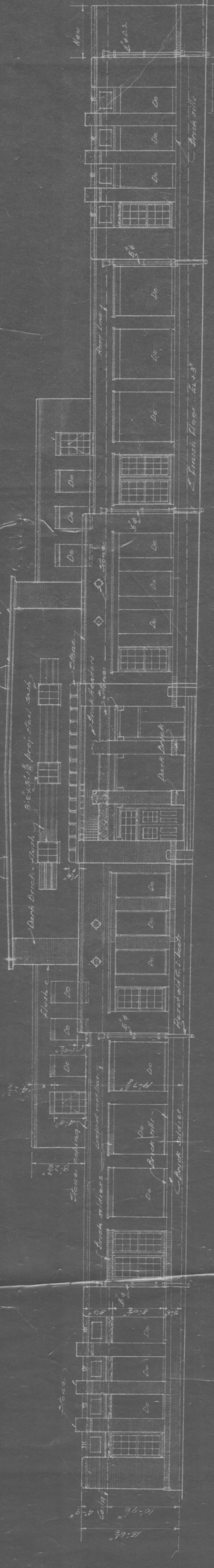
EAST ELEVATION  
SCALE 1/8" = 1'-0"



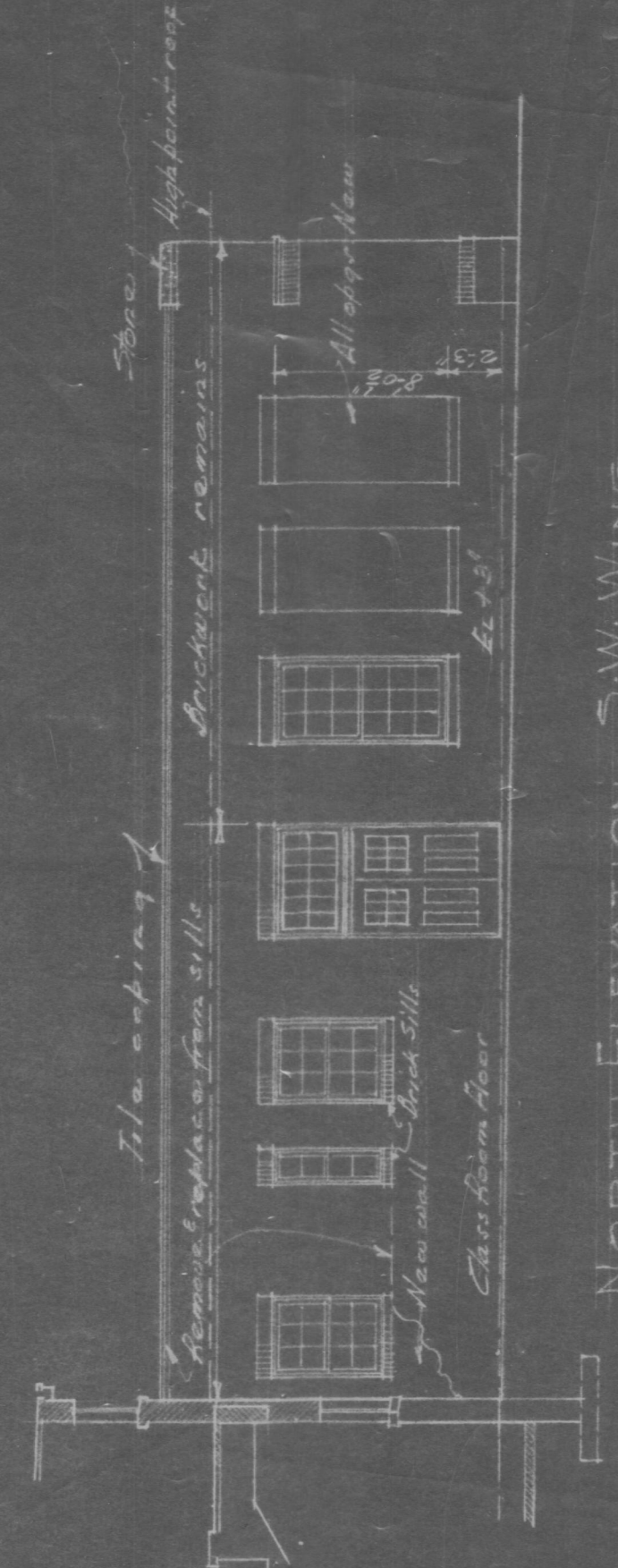
NORTH ELEVATION  
SCALE 1/8" = 1'-0"



WEST ELEVATION  
SCALE 1/8" = 1'-0"



SOUTH (FRONT) ELEVATION  
SCALE 1/8" = 1'-0"



NORTH ELEVATION: S.W. WING

CONTRACTOR REQUIRED TO VERIFY ALL DIMENSIONS.

JOB NO.	723	DATE	2/21/17
DRAWING	SCHOOL BUILDING	REVISIONS	
DRAWN BY	W. VAN TEXAS	SHEET NO.	4
CHECKED BY	W. G. CLARKSON & COMPANY		
	FIRST NATIONAL BANK BUILDING		
	108 N. W. CORNER, DALLAS, TEXAS		

